

The Economics of Women's Rights Replication Package

Michèle Tertilt

University of Mannheim, Germany

Matthias Doepke

Northwestern University, USA and
London School of Economics, UK

Anne Hannusch

University of Mannheim, Germany

Laura Montenbruck

University of Mannheim, Germany

November 2022

1. Replication of Figures and Tables in Main Text

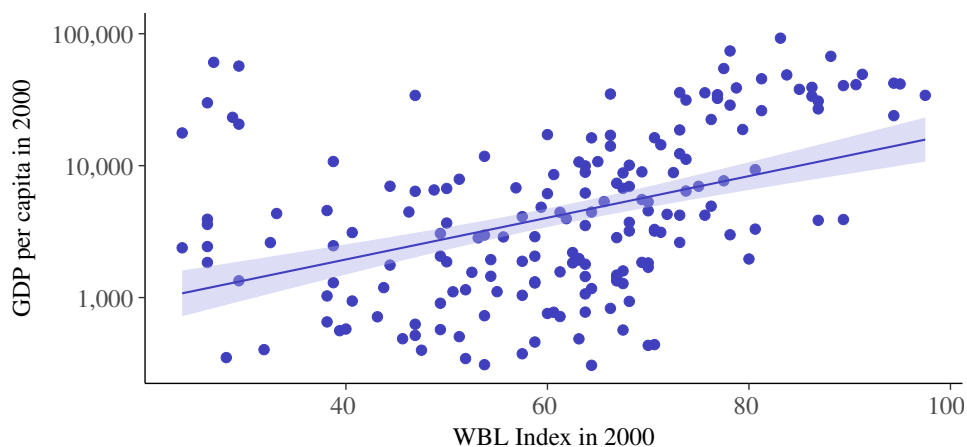


FIGURE 1. Women's Rights and Economic Development across Countries

TABLE 1. Examples of Women's Rights by Income

Right to ...	% of Countries by Income		
	All	Low	High
...be elected	96.7	100	88.9
...sign a contract in the same ways as a man	95.8	88.5	100
...obtain a passport in the same ways as a man	75.3	69.2	82.5
...work night shift the same way as a man	68.9	61.5	80.7
...work in an industrial job the same way as a man	41.1	23.1	45.6
...legal protection against domestic violence	24.2	0	45.6

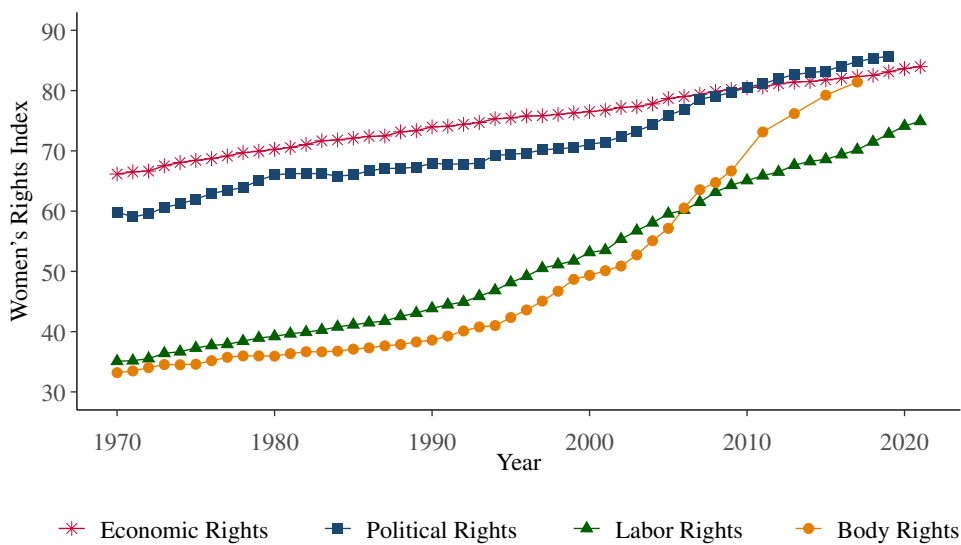


FIGURE 3. Worldwide Increase in Four Women’s Rights Indices

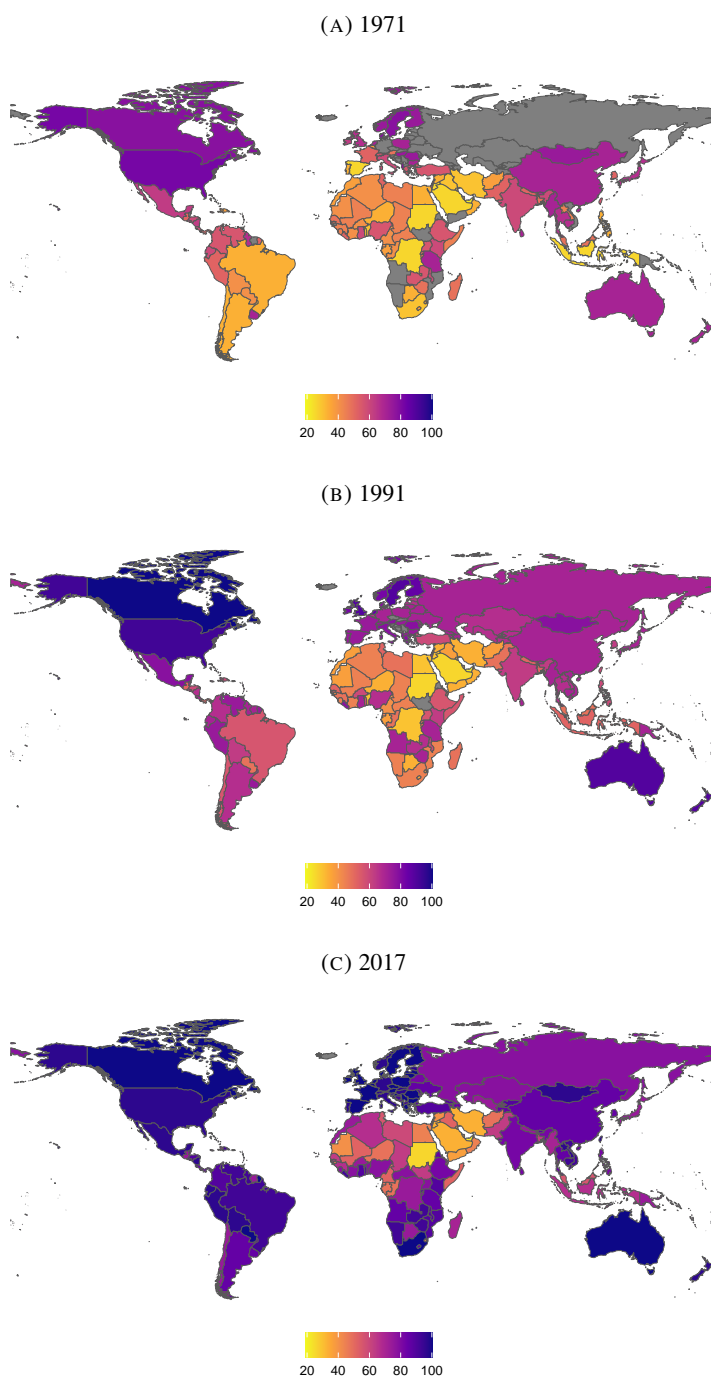


FIGURE 4. The Development of Women's Rights Across the World

TABLE 3. Economic Rights – Summary of Regression Results

	Dependent Variable: Economic Rights Index				
	(1)	(2)	(3)	(4)	(5)
A. Economic Variables					
GDP p.c. (in 1000s)	0.32***	−0.16**	0.04	−0.17**	−0.05
Total Fertility Rate		−7.15***	−1.71***	−6.75***	−6.53***
Female LFP (15-64)		0.53***	0.14***	0.45***	0.43***
B. Interactions with Religion					
Majority Catholic × GDP p.c.					0.12
Majority Muslim × GDP p.c. (in 1000s)					−0.75***
Majority Buddhist × GDP p.c. (in 1000s)					−0.26
Time FEs	<i>No</i>	<i>No</i>	<i>Yes</i>	<i>Yes</i>	<i>Yes</i>
Country FEs	<i>No</i>	<i>No</i>	<i>Yes</i>	<i>No</i>	<i>No</i>
Religion FEs	<i>No</i>	<i>No</i>	<i>No</i>	<i>Yes</i>	<i>Yes</i>
Observations	7796	5428	5428	4045	4045
Adjusted R^2	0.057	0.513	0.919	0.541	0.583

TABLE 4. Political Rights – Summary of Regression Results

	Dependent Variable: Political Rights Index				
	(1)	(2)	(3)	(4)	(5)
A. Economic Variables					
GDP p.c. (in 1000s)	0.11	−0.06	−0.06	−0.07	0.17*
Total Fertility Rate		−2.45***	−1.36***	−1.75**	−1.51**
Female LFP (15-64)		0.34***	0.35***	0.30***	0.26***
B. Interactions with Religion					
Majority Catholic × GDP p.c.					−0.22
Majority Muslim × GDP p.c. (in 1000s)					−1.24***
Majority Buddhist × GDP p.c. (in 1000s)					−0.42**
Time FEs	<i>No</i>	<i>No</i>	<i>Yes</i>	<i>Yes</i>	<i>Yes</i>
Country FEs	<i>No</i>	<i>No</i>	<i>Yes</i>	<i>No</i>	<i>No</i>
Religion FEs	<i>No</i>	<i>No</i>	<i>No</i>	<i>Yes</i>	<i>Yes</i>
Observations	7138	5167	5167	3981	3981
Adjusted R^2	0.009	0.140	0.757	0.181	0.305

TABLE 5. Labor Rights – Summary of Regression Results

	Dependent Variable: Labor Rights Index				
	(1)	(2)	(3)	(4)	(5)
A. Economic Variables					
GDP p.c. (in 1000s)	0.62***	0.26**	−0.26***	0.35***	0.60***
Total Fertility Rate		−4.78***	2.24***	−2.59***	−2.37***
Female LFP (15-64)		0.52***	0.06	0.31***	0.28***
B. Interactions with Religion					
Majority Catholic × GDP p.c.					−0.27
Majority Muslim × GDP p.c. (in 1000s)					−1.23***
Majority Buddhist × GDP p.c. (in 1000s)					−0.69***
Time FEs	<i>No</i>	<i>No</i>	<i>Yes</i>	<i>Yes</i>	<i>Yes</i>
Country FEs	<i>No</i>	<i>No</i>	<i>Yes</i>	<i>No</i>	<i>No</i>
Religion FEs	<i>No</i>	<i>No</i>	<i>No</i>	<i>Yes</i>	<i>Yes</i>
Observations	7796	5428	5428	4045	4045
Adjusted R^2	0.123	0.299	0.826	0.380	0.441

TABLE 6. Rights over Own Body – Summary of Regression Results

	Dependent Variable: Body Rights Index				
	(1)	(2)	(3)	(4)	(5)
A. Economic Variables					
GDP p.c. (in 1000s)	0.57***	0.14*	0.27***	0.22**	0.33***
Total Fertility Rate		−5.82***	2.66***	−4.30***	−4.06***
Female LFP (15-64)		0.32***	0.10**	0.20***	0.18**
B. Interactions with Religion					
Majority Catholic × GDP p.c.					0.07
Majority Muslim × GDP p.c. (in 1000s)					−0.52***
Majority Buddhist × GDP p.c. (in 1000s)					−0.18
Time FEs	<i>No</i>	<i>No</i>	<i>Yes</i>	<i>Yes</i>	<i>Yes</i>
Country FEs	<i>No</i>	<i>No</i>	<i>Yes</i>	<i>No</i>	<i>No</i>
Religion FEs	<i>No</i>	<i>No</i>	<i>No</i>	<i>Yes</i>	<i>Yes</i>
Observations	5578	3950	3950	3492	3492
Adjusted R^2	0.106	0.268	0.776	0.430	0.445

Appendix A: Replication of Figures and Tables in Appendix

TABLE A.3. Economic Rights

	Dependent Variable: Economic Rights Index					
	(1)	(2)	(3)	(4)	(5)	(6)
A. Economic Variables						
GDP p.c. (in 1000s)	0.32*** (0.10)	-0.16** (0.07)	0.04 (0.03)	-0.17** (0.07)	-0.05 (0.05)	
Total Fertility Rate		-7.15*** (0.56)	-1.71*** (0.28)	-6.75*** (0.63)	-6.53*** (0.62)	
Female LFP (15-64)		0.53*** (0.06)	0.14*** (0.03)	0.45*** (0.07)	0.43*** (0.07)	
Majority Catholic				0.74 (2.15)	-0.20 (3.07)	0.13 (2.97)
Majority Muslim				-7.73** (3.57)	-2.82 (3.53)	-22.24*** (3.41)
Majority Buddhist				0.87 (4.05)	3.54 (5.04)	7.11** (3.26)
B. Interactions with Religion						
Majority Catholic \times GDP p.c.					0.12 (0.11)	
Majority Muslim \times GDP p.c. (in 1000s)					-0.75*** (0.13)	
Majority Buddhist \times GDP p.c. (in 1000s)					-0.26 (0.20)	
Time FEs	No	No	Yes	Yes	Yes	Yes
Country FEs	No	No	Yes	No	No	No
Observations	7796	5428	5428	4045	4045	6709
Adjusted R^2	0.057	0.513	0.919	0.541	0.583	0.286

TABLE A.4. Political Rights

	Dependent Variable: Political Rights Index					
	(1)	(2)	(3)	(4)	(5)	(6)
A. Economic Variables						
GDP p.c. (in 1000s)	0.11 (0.12)	−0.06 (0.11)	−0.06 (0.06)	−0.07 (0.13)	0.17* (0.09)	
Total Fertility Rate		−2.45*** (0.64)	−1.36*** (0.44)	−1.75** (0.72)	−1.51** (0.63)	
Female LFP (15-64)		0.34*** (0.07)	0.35*** (0.04)	0.30*** (0.09)	0.26*** (0.08)	
Majority Catholic				1.95 (2.36)	5.11* (2.62)	1.35 (2.34)
Majority Muslim				−0.89 (3.79)	7.68** (3.32)	−9.64** (3.98)
Majority Buddhist				−6.54 (4.13)	−1.90 (5.06)	−3.65 (4.09)
B. Interactions with Religion						
Majority Catholic × GDP p.c.					−0.22 (0.16)	
Majority Muslim × GDP p.c. (in 1000s)					−1.24*** (0.21)	
Majority Buddhist × GDP p.c. (in 1000s)					−0.42** (0.21)	
Time FEs	<i>No</i>	<i>No</i>	<i>Yes</i>	<i>Yes</i>	<i>Yes</i>	<i>Yes</i>
Country FEs	<i>No</i>	<i>No</i>	<i>Yes</i>	<i>No</i>	<i>No</i>	<i>No</i>
Observations	7138	5167	5167	3981	3981	6452
Adjusted R^2	0.009	0.140	0.757	0.181	0.305	0.143

TABLE A.5. Labor Rights

	Dependent Variable: Labor Rights Index					
	(1)	(2)	(3)	(4)	(5)	(6)
A. Economic Variables						
GDP p.c. (in 1000s)	0.62*** (0.14)	0.26** (0.10)	−0.26*** (0.06)	0.35*** (0.11)	0.60*** (0.10)	
Total Fertility Rate		−4.78*** (0.86)	2.24*** (0.48)	−2.59*** (0.93)	−2.37*** (0.90)	
Female LFP (15-64)		0.52*** (0.08)	0.06 (0.05)	0.31*** (0.09)	0.28*** (0.09)	
Majority Catholic				6.93* (3.82)	10.63** (5.09)	1.72 (3.87)
Majority Muslim				−13.82*** (4.82)	−5.07 (4.53)	−22.97*** (4.10)
Majority Buddhist				−5.66 (4.31)	0.61 (4.84)	−5.67 (5.14)
B. Interactions with Religion						
Majority Catholic × GDP p.c.					−0.27 (0.31)	
Majority Muslim × GDP p.c. (in 1000s)					−1.23*** (0.22)	
Majority Buddhist × GDP p.c. (in 1000s)					−0.69*** (0.19)	
Time FEs	<i>No</i>	<i>No</i>	<i>Yes</i>	<i>Yes</i>	<i>Yes</i>	<i>Yes</i>
Country FEs	<i>No</i>	<i>No</i>	<i>Yes</i>	<i>No</i>	<i>No</i>	<i>No</i>
Observations	7796	5428	5428	4045	4045	6709
Adjusted R^2	0.123	0.299	0.826	0.380	0.441	0.264

TABLE A.6. Body Rights

	Dependent Variable: Body Rights Index					
	(1)	(2)	(3)	(4)	(5)	(6)
A. Economic Variables						
GDP p.c. (in 1000s)	0.57*** (0.13)	0.14* (0.08)	0.27*** (0.07)	0.22** (0.09)	0.33*** (0.11)	
Total Fertility Rate		-5.82*** (0.60)	2.66*** (0.62)	-4.30*** (0.65)	-4.06*** (0.65)	
Female LFP (15-64)		0.32*** (0.06)	0.10** (0.05)	0.20*** (0.07)	0.18** (0.07)	
Majority Catholic				2.68 (2.77)	2.13 (3.63)	2.25 (3.09)
Majority Muslim				-1.25 (3.57)	1.99 (3.77)	-8.22*** (2.93)
Majority Buddhist				-3.70 (4.40)	-1.72 (5.73)	0.51 (4.25)
B. Interactions with Religion						
Majority Catholic \times GDP p.c.					0.07 (0.17)	
Majority Muslim \times GDP p.c. (in 1000s)					-0.52*** (0.12)	
Majority Buddhist \times GDP p.c. (in 1000s)					-0.18 (0.24)	
Time FEs	No	No	Yes	Yes	Yes	Yes
Country FEs	No	No	Yes	No	No	No
Observations	5578	3950	3950	3492	3492	5530
Adjusted R^2	0.106	0.268	0.776	0.430	0.445	0.335

A.5. Graphical Illustration of Time Fixed Effects



FIGURE A.1. Time Fixed Effects by Rights Index

Appendix B: Replication of Figures and Tables in the Online Appendix**B.2. Robustness Checks: Regression Results**

TABLE B.2. Economic Rights - Robustness Checks

	Dependent Variable: Economic Rights Index				
	(1)	(2)	(3)	(4)	(5)
A. Economic Variables					
GDP p.c. (in 1000s)	-0.05 (0.05)	-0.02 (0.06)	-0.05 (0.05)	-0.05 (0.05)	-0.06 (0.07)
Total Fertility Rate	-6.53*** (0.62)	-6.44*** (0.64)	-6.25*** (0.61)	-6.47*** (0.58)	
Female LFP (15-64)	0.43*** (0.07)	0.40*** (0.07)	0.39*** (0.07)	0.42*** (0.06)	0.40*** (0.09)
OPEC			-10.49* (5.78)		
Secondary School Enrollment					0.31*** (0.04)
B. Religion and Interactions with Religion					
Majority Catholic	-0.20 (3.07)	-0.14 (3.14)	-0.63 (2.98)	-0.17 (3.07)	3.08 (3.49)
Majority Catholic \times GDP p.c. (in 1000s)	0.12 (0.11)	0.08 (0.12)	0.13 (0.11)	0.12 (0.11)	0.02 (0.12)
Majority Muslim	-2.82 (3.53)	-3.40 (3.43)	-3.35 (3.50)	-2.99 (3.42)	-4.80 (4.47)
Majority Muslim \times GDP p.c. (in 1000s)	-0.75*** (0.13)	-0.76*** (0.14)	-0.61*** (0.15)	-0.75*** (0.13)	-0.75*** (0.20)
Majority Buddhist	3.54 (5.04)	3.08 (5.62)	3.16 (4.89)	3.51 (4.96)	10.28* (5.87)
Majority Buddhist \times GDP p.c. (in 1000s)	-0.26 (0.20)	-0.26 (0.22)	-0.25 (0.19)	-0.24 (0.19)	-0.38 (0.29)
Observations	4045	3447	4045	4045	2905
Adjusted R^2	0.583	0.593	0.595	0.583	0.534

TABLE B.3. Political Rights - Robustness Checks

	Dependent Variable: Political Rights Index				
	(1)	(2)	(3)	(4)	(5)
A. Economic Variables					
GDP p.c. (in 1000s)	0.17* (0.09)	0.23** (0.10)	0.17* (0.09)	0.14 (0.09)	0.16* (0.09)
Total Fertility Rate	-1.51** (0.63)	-1.44** (0.66)	-1.36** (0.64)	-2.13*** (0.59)	
Female LFP (15-64)	0.26*** (0.08)	0.24*** (0.08)	0.24*** (0.08)	0.31*** (0.07)	0.30*** (0.09)
OPEC			-5.74 (4.78)		
Secondary School Enrollment					0.11*** (0.04)
B. Religion and Interactions with Religion					
Majority Catholic	5.11* (2.62)	4.06 (2.68)	4.87* (2.63)	5.23* (2.70)	6.98** (3.18)
Majority Catholic \times GDP p.c. (in 1000s)	-0.22 (0.16)	-0.25 (0.16)	-0.22 (0.16)	-0.21 (0.16)	-0.32* (0.17)
Majority Muslim	7.68** (3.32)	7.36** (3.42)	7.34** (3.37)	9.70*** (3.21)	9.95*** (3.78)
Majority Muslim \times GDP p.c. (in 1000s)	-1.24*** (0.21)	-1.34*** (0.20)	-1.16*** (0.19)	-1.21*** (0.22)	-1.32*** (0.15)
Majority Buddhist	-1.90 (5.06)	0.32 (3.73)	-2.11 (5.09)	-2.34 (5.08)	1.33 (4.22)
Majority Buddhist \times GDP p.c. (in 1000s)	-0.42** (0.21)	-0.54*** (0.16)	-0.42** (0.21)	-0.42** (0.21)	-0.52** (0.22)
Observations	3981	3447	3981	3981	2859
Adjusted R^2	0.305	0.342	0.309	0.252	0.316

TABLE B.4. Labor Rights - Robustness Checks

	Dependent Variable: Labor Rights Index				
	(1)	(2)	(3)	(4)	(5)
A. Economic Variables					
GDP p.c. (in 1000s)	0.60*** (0.10)	0.75*** (0.11)	0.60*** (0.10)	0.54*** (0.09)	0.61*** (0.11)
Total Fertility Rate	-2.37*** (0.90)	-1.71* (0.92)	-2.38*** (0.91)	-3.43*** (0.85)	
Female LFP (15-64)	0.28*** (0.09)	0.22** (0.09)	0.28*** (0.09)	0.38*** (0.08)	0.33*** (0.09)
OPEC			0.33 (6.20)		
Secondary School Enrollment					0.11* (0.05)
B. Religion and Interactions with Religion					
Majority Catholic	10.63** (5.09)	11.24** (5.49)	10.64** (5.11)	10.47** (5.10)	9.24* (4.99)
Majority Catholic \times GDP p.c. (in 1000s)	-0.27 (0.31)	-0.38 (0.34)	-0.27 (0.31)	-0.25 (0.31)	-0.20 (0.31)
Majority Muslim	-5.07 (4.53)	-5.01 (4.71)	-5.05 (4.54)	-1.77 (4.41)	-6.04 (4.91)
Majority Muslim \times GDP p.c. (in 1000s)	-1.23*** (0.22)	-1.38*** (0.22)	-1.23*** (0.25)	-1.18*** (0.23)	-1.21*** (0.30)
Majority Buddhist	0.61 (4.84)	0.56 (4.46)	0.62 (4.86)	-0.11 (4.77)	1.19 (4.81)
Majority Buddhist \times GDP p.c. (in 1000s)	-0.69*** (0.19)	-0.70*** (0.18)	-0.69*** (0.19)	-0.72*** (0.19)	-0.45* (0.24)
Observations	4045	3447	4045	4045	2905
Adjusted R^2	0.441	0.440	0.441	0.392	0.469

TABLE B.5. Body Rights - Robustness Checks

	Dependent Variable: Body Rights Index				
	(1)	(2)	(3)	(4)	(5)
A. Economic Variables					
GDP p.c. (in 1000s)	0.33*** (0.11)	0.33*** (0.11)	0.33*** (0.11)	0.23** (0.10)	0.20** (0.10)
Total Fertility Rate	-4.06*** (0.65)	-4.05*** (0.65)	-3.83*** (0.62)	-5.49*** (0.60)	
Female LFP (15-64)	0.18** (0.07)	0.18** (0.07)	0.16** (0.08)	0.32*** (0.07)	0.22** (0.09)
OPEC			-8.68 (5.78)		
Secondary School Enrollment					0.22*** (0.04)
B. Religion and Interactions with Religion					
Majority Catholic	2.13 (3.63)	2.27 (3.63)	1.80 (3.55)	1.63 (3.82)	4.38 (3.86)
Majority Catholic \times GDP p.c. (in 1000s)	0.07 (0.17)	0.06 (0.17)	0.08 (0.17)	0.09 (0.17)	0.03 (0.19)
Majority Muslim	1.99 (3.77)	2.31 (3.77)	1.53 (3.80)	6.28* (3.63)	1.35 (4.15)
Majority Muslim \times GDP p.c. (in 1000s)	-0.52*** (0.12)	-0.53*** (0.12)	-0.41*** (0.15)	-0.42*** (0.12)	-0.32** (0.13)
Majority Buddhist	-1.72 (5.73)	-0.58 (5.56)	-1.99 (5.66)	-2.31 (6.23)	-0.49 (6.18)
Majority Buddhist \times GDP p.c. (in 1000s)	-0.18 (0.24)	-0.22 (0.23)	-0.17 (0.23)	-0.25 (0.26)	0.01 (0.29)
Observations	3492	3447	3492	3492	2491
Adjusted R^2	0.445	0.446	0.451	0.283	0.474

B.3. Additional Factors: Regression Results

TABLE B.6. Economic Rights - Additional Factors

	Dependent Variable: Economic Rights Index							
	(1)	(2)	(3)	(4)	(5)	(6)	(7)	(8)
A. Economic Variables								
GDP p.c. (in 1000s)	-0.05 (0.05)	-0.04 (0.05)	-0.02 (0.07)	-0.10 (0.09)	-0.06 (0.08)	-0.08 (0.06)	-0.09 (0.06)	-0.08 (0.06)
Majority Catholic × GDP p.c. (in 1000s)	0.12 (0.11)	0.10 (0.11)	0.13 (0.10)	0.18* (0.09)	0.11 (0.14)	0.17 (0.12)	0.14 (0.11)	0.14 (0.12)
Majority Muslim × GDP p.c. (in 1000s)	-0.75*** (0.13)	-0.54* (0.31)	-0.75*** (0.12)	-0.79*** (0.20)	-0.94*** (0.24)	-0.84*** (0.21)	-0.70*** (0.13)	-0.71*** (0.13)
Majority Buddhist × GDP p.c. (in 1000s)	-0.26 (0.20)	-0.29 (0.20)	-0.14 (0.20)	-0.18 (0.23)	-0.30 (0.24)	-0.23 (0.23)	-0.20 (0.20)	-0.21 (0.21)
Total Fertility Rate	-6.53*** (0.62)	-6.33*** (0.67)	-7.91*** (1.14)	-7.24*** (0.76)	-6.23*** (0.63)	-6.36*** (0.66)	-6.16*** (0.63)	-6.44*** (0.61)
Female LFP (15-64)	0.43*** (0.07)	0.41*** (0.07)	0.42*** (0.08)	0.50*** (0.08)	0.39*** (0.07)	0.42*** (0.07)	0.42*** (0.07)	0.41*** (0.07)
B. Additional Factors								
Female population share		0.64 (0.78)						
Employment in Agriculture			0.11 (0.10)					
Government Effectiveness QoG data, by Ebetürk (2021)				-0.38 (2.02)				
Nb. Women INGOs, by Ebetürk (2021)					0.18 (0.30)			
Nb. of Conventions ratified, by Ebetürk (2021)						1.56* (0.91)		
Avg. Nb. of Regional Ratifications							5.27** (2.46)	
Women in parliament ever >20								(1.70)
Time FEs	Yes	Yes	Yes	Yes	Yes	Yes	Yes	Yes
Religion FEs	Yes	Yes	Yes	Yes	Yes	Yes	Yes	Yes
Observations	4045	4043	3467	2121	2548	3717	4045	4012
Adjusted R ²	0.583	0.585	0.605	0.609	0.569	0.593	0.587	0.585
Country FEs		No	No	No	No	No	No	No

TABLE B.7. Political Rights - Additional Factors

	Dependent Variable: Political Rights Index							
	(1)	(2)	(3)	(4)	(5)	(6)	(7)	(8)
A. Economic Variables								
GDP p.c. (in 1000s)	0.17* (0.09)	0.20** (0.08)	0.25*** (0.08)	0.12 (0.11)	0.04 (0.16)	0.14 (0.09)	0.10 (0.10)	-0.10 (0.07)
Majority Catholic × GDP p.c. (in 1000s)	-0.22 (0.16)	-0.25 (0.15)	-0.18 (0.18)	-0.22 (0.19)	-0.29* (0.18)	-0.22 (0.15)	-0.18 (0.16)	0.03 (0.05)
Majority Muslim × GDP p.c. (in 1000s)	-1.24*** (0.21)	-0.80* (0.41)	-1.23*** (0.22)	-1.03*** (0.34)	-1.80*** (0.43)	-1.19*** (0.39)	-1.16*** (0.22)	-0.82*** (0.21)
Majority Buddhist × GDP p.c. (in 1000s)	-0.42** (0.21)	-0.47** (0.20)	-0.34 (0.23)	-0.62** (0.24)	-0.46* (0.25)	-0.40* (0.21)	-0.32 (0.22)	0.17 (0.13)
Total Fertility Rate	-1.51** (0.63)	-1.09* (0.64)	-2.90*** (1.07)	-1.39 (0.88)	-1.28** (0.62)	-1.28** (0.64)	-0.94 (0.64)	-0.77** (0.33)
Female LFP (15-64)	0.26*** (0.08)	0.22*** (0.07)	0.19** (0.08)	0.27*** (0.09)	0.27*** (0.09)	0.26*** (0.08)	0.24*** (0.08)	0.11* (0.06)
B. Additional Factors								
Female population share		1.39 (1.13)						
Employment in Agriculture			0.16* (0.09)					
Government Effectiveness QoG data, by Ebetürk (2021)				1.43 (1.94)				
Nb. Women INGOs, by Ebetürk (2021)					1.15** (0.53)			
Nb. of Conventions ratified, by Ebetürk (2021)						4.43*** (1.09)		
Avg. Nb. of Regional Ratifications							8.06** (3.59)	
Women in parliament ever >20								(1.04)
Time FEs	Yes	Yes	Yes	Yes	Yes	Yes	Yes	Yes
Religion FEs	Yes	Yes	Yes	Yes	Yes	Yes	Yes	Yes
Observations	3981	3979	3415	2087	2537	3660	3981	3981
Adjusted R ²	0.305	0.313	0.312	0.241	0.320	0.315	0.317	0.778
Country FEs		No	No	No	No	No	No	No

TABLE B.8. Labor Rights - Additional Factors

	Dependent Variable: Labor Rights Index							
	(1)	(2)	(3)	(4)	(5)	(6)	(7)	(8)
A. Economic Variables								
GDP p.c. (in 1000s)	0.60*** (0.10)	0.62*** (0.10)	0.54*** (0.10)	0.35*** (0.12)	0.70*** (0.13)	0.60*** (0.10)	0.54*** (0.10)	0.54*** (0.10)
Majority Catholic × GDP p.c. (in 1000s)	-0.27 (0.31)	-0.29 (0.31)	-0.24 (0.27)	-0.09 (0.25)	-0.38 (0.42)	-0.15 (0.31)	-0.23 (0.30)	-0.21 (0.32)
Majority Muslim × GDP p.c. (in 1000s)	-1.23*** (0.22)	-0.90*** (0.34)	-1.23*** (0.24)	-1.04*** (0.36)	-1.26*** (0.45)	-1.25*** (0.38)	-1.16*** (0.22)	-1.16*** (0.21)
Majority Buddhist × GDP p.c. (in 1000s)	-0.69*** (0.19)	-0.72*** (0.19)	-0.75*** (0.21)	-0.77*** (0.21)	-0.76*** (0.23)	-0.69*** (0.21)	-0.60*** (0.19)	-0.56*** (0.21)
Total Fertility Rate	-2.37*** (0.90)	-2.04** (0.97)	-1.91 (1.34)	-1.18 (1.18)	-1.26 (0.89)	-1.99** (0.91)	-1.85** (0.92)	-2.16** (0.88)
Female LFP (15-64)	0.28*** (0.09)	0.25*** (0.09)	0.30*** (0.10)	0.32*** (0.11)	0.22** (0.09)	0.27*** (0.09)	0.26*** (0.09)	0.24*** (0.08)
B. Additional Factors								
Female population share		1.04 (0.83)						
Employment in Agriculture			-0.04 (0.11)					
Government Effectiveness QoG data, by Ebetürk (2021)				4.06 (2.74)				
Nb. Women INGOs, by Ebetürk (2021)					0.73 (0.45)			
Nb. of Conventions ratified, by Ebetürk (2021)						1.02 (1.22)		
Avg. Nb. of Regional Ratifications							7.31** (3.33)	
Women in parliament ever >20								(3.34)
Time FEs	Yes	Yes	Yes	Yes	Yes	Yes	Yes	Yes
Religion FEs	Yes	Yes	Yes	Yes	Yes	Yes	Yes	Yes
Observations	4045	4043	3467	2121	2548	3717	4045	4012
Adjusted R ²	0.441	0.444	0.434	0.413	0.409	0.432	0.446	0.455
Country FEs		No	No	No	No	No	No	No

TABLE B.9. Body Rights - Additional Factors

	Dependent Variable: Body Rights Index							
	(1)	(2)	(3)	(4)	(5)	(6)	(7)	(8)
A. Economic Variables								
GDP p.c. (in 1000s)	0.33*** (0.11)	0.33*** (0.11)	0.31** (0.12)	-0.00 (0.13)	0.21 (0.15)	0.30*** (0.12)	0.33*** (0.13)	0.30** (0.12)
Majority Catholic × GDP p.c. (in 1000s)	0.07 (0.17)	0.06 (0.18)	0.14 (0.18)	0.17 (0.15)	0.12 (0.23)	0.17 (0.18)	0.06 (0.18)	0.09 (0.18)
Majority Muslim × GDP p.c. (in 1000s)	-0.52*** (0.12)	-0.42* (0.22)	-0.53*** (0.12)	-0.42*** (0.14)	-0.18 (0.19)	-0.47*** (0.15)	-0.53*** (0.14)	-0.48*** (0.13)
Majority Buddhist × GDP p.c. (in 1000s)	-0.18 (0.24)	-0.19 (0.24)	-0.26 (0.24)	-0.49** (0.23)	-0.18 (0.22)	-0.24 (0.24)	-0.19 (0.25)	-0.16 (0.23)
Total Fertility Rate	-4.06*** (0.65)	-3.96*** (0.71)	-4.65*** (1.06)	-3.04*** (1.00)	-3.31*** (0.64)	-3.58*** (0.67)	-4.12*** (0.66)	-4.00*** (0.65)
Female LFP (15-64)	0.18** (0.07)	0.17** (0.08)	0.22** (0.09)	0.20** (0.10)	0.12 (0.07)	0.13* (0.08)	0.18** (0.07)	0.17** (0.07)
B. Additional Factors								
Female population share		0.32 (0.67)						
Employment in Agriculture			0.01 (0.10)					
Government Effectiveness QoG data, by Ebetürk (2021)				7.80*** (2.58)				
Nb. Women INGOs, by Ebetürk (2021)					0.69 (0.43)			
Nb. of Conventions ratified, by Ebetürk (2021)						2.17* (1.19)		
Avg. Nb. of Regional Ratifications							-0.80 (3.71)	
Women in parliament ever >20								(2.57)
Time FEs	Yes	Yes	Yes	Yes	Yes	Yes	Yes	Yes
Religion FEs	Yes	Yes	Yes	Yes	Yes	Yes	Yes	Yes
Observations	3492	3492	2957	1715	2395	3212	3492	3466
Adjusted R ²	0.445	0.445	0.441	0.430	0.348	0.458	0.445	0.450
Country FEs		No	No	No	No	No	No	No